



Checking the number and location of cars, trucks, and motorcycles at Cirkewwa and Mgarr embarkations and assessing boarding time



Powered by our patented
SophyAI Platform

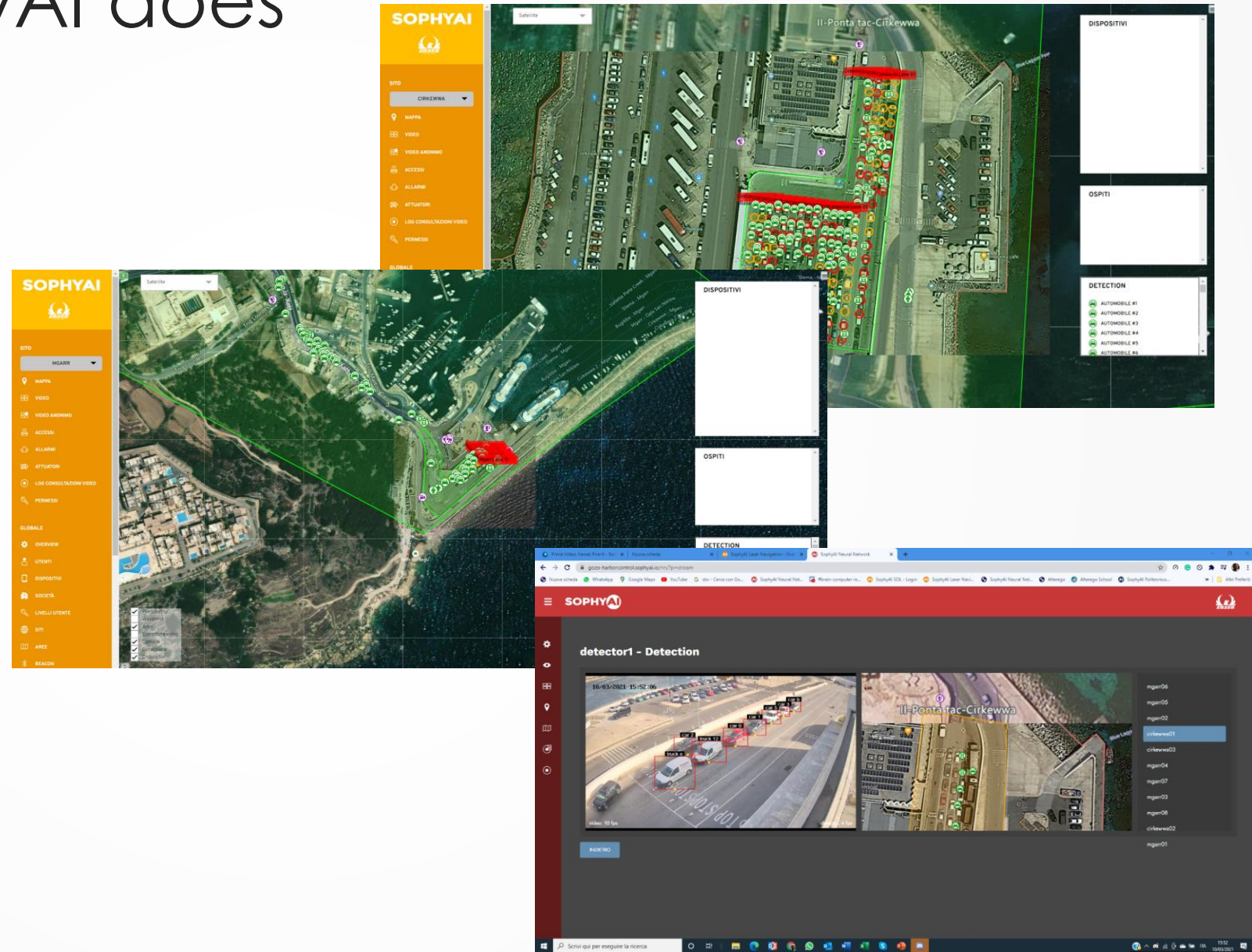
The solved problem

- Knowing the waiting time for boarding ferries was a necessity for port authorities, but until now, they relied on estimates from employees at the boarding docks.
- SophyAI solved the problem by "observing" from cameras not only the boarding areas, but also the traffic on the roads leading to the ports.



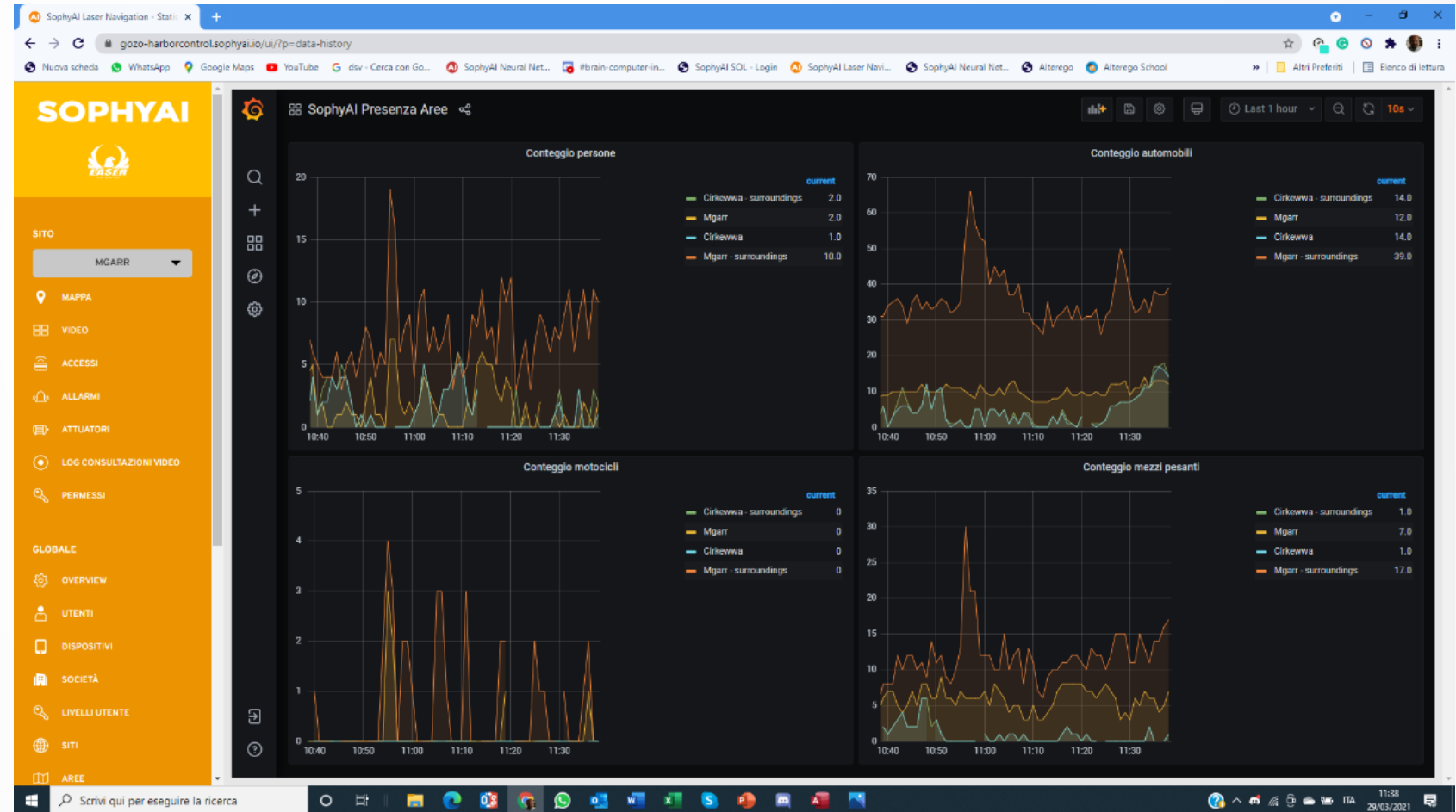
What SopyAI does

- **SophyAI** recognizes and distinguishes vehicle types, geolocates them, and represents them in **digital twin** on the map.
- The platform allows immediate tracking of geofences, on which to activate detection and on which to assign vehicle counts.
- Geofences can be defined for areas prohibited to specific vehicles to know whether the position rules for boarding are being respected.



What is obtainable from ordinary surveillance cameras

➔ SophyAI's processing is first proposed on a dashboard that contains not only the real-time situation but also the historical series of traffic, of course differentiated by vehicle type.



The synthesis of SophyAI that users are interested in

- An application, dispatched by the Port Authority, informs users about the number of vehicles and waiting times for boarding.

